



# CHESS MOVES

**CAMBERWELL HIGH EX-STUDENTS' SOCIETY INC.**

**IN THIS ISSUE:**

President's Report  
Principal's Message  
Canberra Chapter  
Committee News  
40s & 50s Reunion  
VALE notices  
(Our DISCOurse will be held over for the next issue due to CHESS needing to get this issue printed asap.)

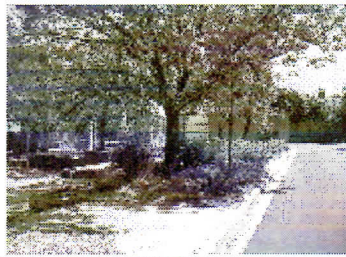
<http://www.chessmoves.com>

**October 2010**

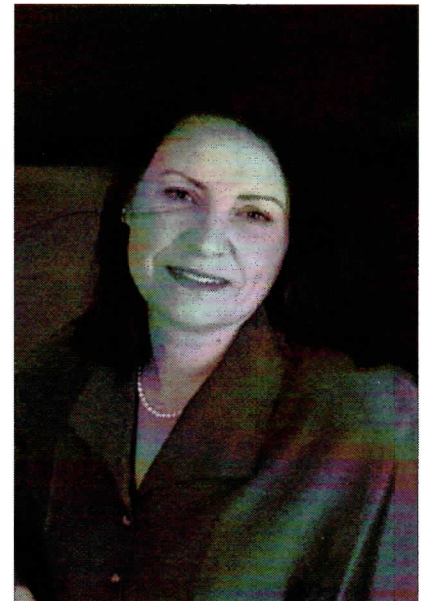
## CHESS REPORT

### BUSY TIMES FOR CHESS!

Your CHESS Committee has been very active during this second half of 2010.



The Kooyong Luncheon in September was a highlight, with members interested to meet our Principal – Ms Jill Laughlin. Jill gave an enthusiastic overview of future challenges and initiatives for Camberwell High School, delivered in conjunction with a most informative DVD presentation. In appreciation, Jill was presented with the history of the first 50 years of CHS. Jill's assistant, Louise Spencer, also joined us for lunch in recognition of her continued help as our conduit to the school.



During the luncheon a special presentation of a wall plaque was made to our immediate past President Bernard Corser in acknowledgement of his considerable and lengthy service to CHESS.

### MEETING DATES: 21st February 2011

Venue is in the conference room of CHS - turn left inside the main entrance. 7pm start. Please email/message Pat if you wish to attend.

This annual event is sponsored by CHESS Committee member, Bruce Hayman, and on behalf of all CHESS members I thank Bruce for his ongoing support and generosity.

The 1940s & 50s Reunion on the 15th October was a huge success where over 180 ex-CHS students braved very inclement weather to gather at Wattle Park Chalet. As numbers exceeded our expectations guests were a little cramped, but this did not diminish the enthusiasm of people to mingle, share memorabilia and reminisce about their school days. Jill Laughlin was again a wonderful addition to a CHESS event. Committee members, and siblings, Deb Johnson and Neil Bouvier busily photographed each table and exit year group and these photos can now be found on our website.

**CHESS still has stock of school song CDs @ \$12 and badges @ \$7 - email [patjdouglas@jprimus.com.au](mailto:patjdouglas@jprimus.com.au)**

Our DVD of school photos from the period rotated throughout the afternoon attracting an appreciative crowd. What a pleasure it was to see yourself in a school sports team 60 years ago!

*(continued overleaf)*