



IN THIS ISSUE:

President's Report
Principal's Message
Canberra Chapter
Committee News
40s & 50s Reunion
VALE notices
(Our DISCOurse will be
held over for the next issue
due to CHESS needing to
get this issue printed asap.)



MEETING DATES: 21st February 2011

Venue is in the conference room of CHS - turn left inside the main entrance. 7pm start. Please email/message Pat if you wish to attend.

**CHESS still has stock of
school song CDs @ \$12
and badges @ \$7 -
email
patjdouglas@iprimus.com.au**

CHESS MOVES

CAMBERWELL HIGH EX-STUDENTS' SOCIETY INC.

<http://www.chessmoves.com>

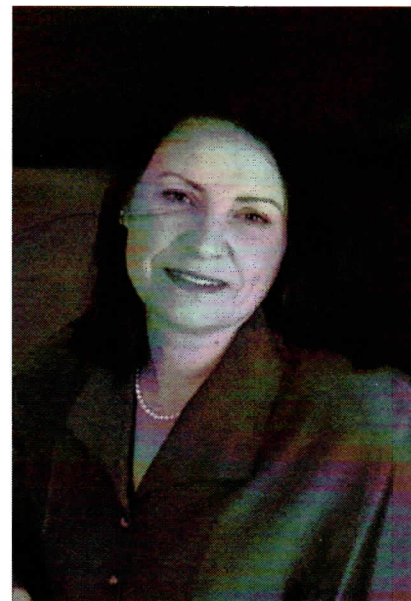
October 2010

CHESS REPORT

BUSY TIMES FOR CHESS!

Your CHESS Committee has been very active during this second half of 2010.

The Kooyong Luncheon in September was a highlight, with members interested to meet our Principal – Ms Jill Laughlin. Jill gave an enthusiastic overview of future challenges and initiatives for Camberwell High School, delivered in conjunction with a most informative DVD presentation. In appreciation, Jill was presented with the history of the first 50 years of CHS. Jill's assistant, Louise Spencer, also joined us for lunch in recognition of her continued help as our conduit to the school.



During the luncheon a special presentation of a wall plaque was made to our immediate past President Bernard Corser in acknowledgement of his considerable and lengthy service to CHESS.

This annual event is sponsored by CHESS Committee member, Bruce Hayman, and on behalf of all CHESS members I thank Bruce for his ongoing support and generosity.

The 1940s & 50s Reunion on the 15th October was a huge success where over 180 ex-CHS students braved very inclement weather to gather at Wattle Park Chalet. As numbers exceeded our expectations guests were a little cramped, but this did not diminish the enthusiasm of people to mingle, share memorabilia and reminisce about their school days. Jill Laughlin was again a wonderful addition to a CHESS event. Committee members, and siblings, Deb Johnson and Neil Bouvier busily photographed each table and exit year group and these photos can now be found on our website.

Our DVD of school photos from the period rotated throughout the afternoon attracting an appreciative crowd. What a pleasure it was to see yourself in a school sports team 60 years ago!

(continued overleaf)

PRESIDENT

Kate Hamond
(M) 0413-802886
kate.hamond@gmail.com

SECRETARY

Pat Douglas
PO Box 201
Chirnside Park 3116
(H) 97394829
patjdouglas@iprimus.com.au

TREASURER

Neil Bouvier
10 O'Dwyer Street
Mordialloc 3195
(H) 95880328
booves@optusnet.com.au

EDITOR

Deb Johnson
2 Duval Court
Wheelers Hill 3150
(H) 86858782
(M) 0412-844175
editor@chessmoves.com

We welcome any contributions from past students. Please contact Deb by post or email with any written articles. Also, if any CHESS members wish to place ads, please contact Pat. Also please consider our chessmoves website for your advertising!

CHESSMOVES
DEADLINE FOR
NEXT ISSUE:
February 15th, 2011.
Send all articles to
Debs.

(continued from Page 1)

I was delighted to note that many CHESS badges, school song CDs and books on the history of CHS were sold at both the luncheon and the reunion. If members are interested in acquiring any of this merchandise, I suggest you contact CHESS as stocks are running out fast! Following this great year, your committee and I look forward to planning an equally fruitful 2011 CHESS year. Naturally, your ideas and suggestions are always welcome.

Other activities have and will include liaison with the school council, meeting with school student leaders, representing CHESS at the Valedictory Dinner and other end of year functions, managing the website, establishing a database and member enquiries.

Finally I would like to acknowledge your CHESS committee members for their hard work and wonderful support during 2010. Between us we have suffered significant trials including major surgery, family tragedy, and illness, but CHESS has enjoyed a year of great activity and increased membership numbers. Never has so much been done by so few with so little. In particular I would like to thank our Secretary Pat Douglas for her continued hard work and efficiency. Pat really is the backbone of CHESS.

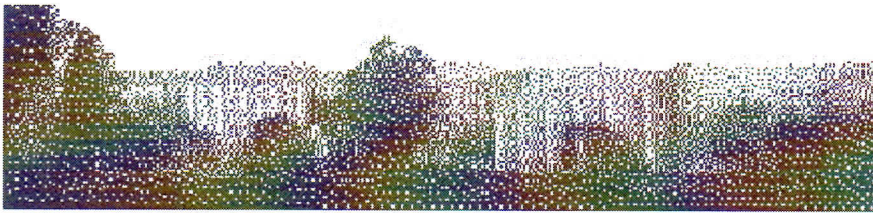
May you enjoy the coming festive season with those you love best, and I look forward to seeing you at a CHESS function in 2011.

KATE HAMOND
CHESS President



Scenes from our CHESS Luncheon - Kate presents Bernard with a CHESS wall plaque at left. Luncheon guests above and below...with Jill Laughlin and Kate.





Principal's Message

Attending the Reunion of the 1940's and 1950's students was an amazing experience. Despite the dreadful weather on Friday 15th October, 180 ex students were in attendance. Their affection for their old school and their excitement about reuniting was a pleasure to witness. What a wonderful school I have been welcomed into!

I spent the holiday period in China with 17 Principals from Victorian schools and in addition to some amazing sightseeing visited seven schools across three cities. The pace of change and globalisation is extraordinary to see and has accelerated markedly from my trip there five years ago. One school in particular, the Jin Cai High School in Shanghai, was particularly striking in this regard. The English speaking and writing capacity of the students at Year 10 Level was excellent as was the students' awareness of and knowledge about the world. The Jin Cai School is interested in pursuing a cultural exchange program with Camberwell and I will be exploring this further within the context of building Asian Studies as a key component of the National Curriculum.



The Education Design Brief for the proposed Innovation Centre building has been completed and we look forward to receiving an architectural response shortly. A team of Year 9 teachers will be working to develop the Connections program, a new subject for 2011 over the next few weeks. When the Innovation Centre is completed, it is anticipated that Connections and project based learning for Years 7 and 8 students will be located there. Providing a purpose built environment ensures that creative, hands on and inquiry based learning will be well supported.

We have farewelled our Year 12 students for 2010 this week. A number of special events took place to honour their contribution to the school and to wish them well for their exams and the future. I have only known this group for a short time but in all of my interactions I have found them to be delightful. The Year 12 Student Leaders are impressive young people and I have gained enormous insights from my weekly meetings with them. They are a credit to themselves, their families and to their school. It was great to have Kate Hammond at the Valedictory Assembly to welcome the outgoing Year 12's as ex students of CHS.

I look forward to the many events planned for this term, especially the Presentation Night for Years 7 - 11 which recognises student achievement and, most importantly, participation in school programs. I appreciate the way in which our parent community supports these special times and in particular the work of PFA who do such a wonderful job. Their luncheon for the Valedictory Day Celebrations was exceptional. Sharing this occasion with our Year 12 students was a highlight of the year for me.

An exciting request for CHS has come from the location manager of the film 'Knowing'. He has asked to use the CHS site for part of a new Australian television series, 'Small Time Gangster'. This will provide an opportunity for some students to work in the crowd scenes. This would be low level usage for one day in November. I will let you know when the film is available for viewing.

Jill Laughlin
Principal

CANBERRA CHAPTER - Allan Carter

Our most recent two functions were, firstly, a lunch in June at "The Homestead Cafe", and secondly, a visit to Lanyon Homestead in October.

"The Homestead Cafe" is located on the Gooroomon Ponds Road, not far from the village of Hall, which is just off the Barton Highway on the way in to Canberra. The cafe is co-located with the Gooroomon Park Riding Centre, a horse riding park. We had 18 enjoy a very good lunch sitting inside (it was June) looking out at the views across the outskirts of Canberra and the Murrumbidgee River valley to the Brindabella Mountains beyond. This is one of the delights of living in Canberra that these peaceful views are so close and all around us. Another plus for horse riders is that there are quite a number of horse riding centres, like Gooroomon Park, scattered in and around Canberra and the local area. I might add that none of us went riding that day.

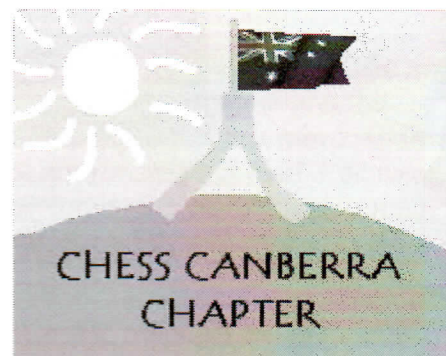
Our visit to Lanyon Homestead on Saturday, 9th October was another delightful excursion. This time we were in perfect Canberra spring weather - warm sunshine, no rain, and just a light breeze. By contrast a week later, Saturday was feeling the effects of heavy rain during the previous 24 hours and Lanyon was closed indefinitely because of flooding in the house. So we were lucky in our choice of day.



Lanyon is a historic pastoral and mixed farming property typical of the district. It was first settled in 1834 and some of the original buildings can still be seen. At this time convicts were still being used as cheap labour on the farms and properties. In 1849 a shrewd Scottish neighbouring farmer, Andrew Cunningham, bought Lanyon, and some other properties as well, and proceeded to consolidate some of them.

He built the present house in 1859 on a rather grander scale than the previous one. The house was extended in 1905. Other owners moved in in the 1920s and made a few more changes. The Commonwealth Government took over Lanyon in 1974 and since then it, and later the ACT Government, have been preserving the property much as it would have been in the 19th

Century. A few of the original furnishings and fittings remain, but the bulk of those on display have been acquired elsewhere. The aim was, and is, to restore it in character with the period rather trying to recreate it as it was.



Our visit was organised by Fred and Lois Roberts who are guides out at Lanyon. They gave the other ten of us an excellent guided tour of the house and the out buildings surrounding it.

Following the tour we then had a most enjoyable lunch outside the cafe on the lawn under the trees. We were joined for lunch by Victor Isaacs and his wife Agnes who are rejoining us after a number of years. It was good to see them after such a long time.



For any CHESS members coming to Canberra for a few days, then Lanyon is well worth the visit. It is located about 30 minutes drive out on the Tharwa road, a little south of Canberra's southernmost suburbs. There is a charge of \$7 for admission to the house.

Allan Carter
alcarter@iinet.net.au
(02) 62519921



CHESS MOVIES

6 *The 40s & 50s Reunion* *held at Wattle Park Chalet on October 15th*

This was a fantastic success, despite the appalling weather. And wonderful to see the historic chalet packed with former students from this era. The powerpoint of all the photos from CHS archives was commented upon favourably with many recognising themselves and their friends. The setting was so appropriate, given the relationship between our school and the chalet during the Warragul High School visits in the

forties. Plus many of us have fond memories of the chalet and climbing in the trams nearby.



After an introduction by Kate Hammond, our new CHS Principal, Jill Laughlin, spoke to the assembled throng and she mentioned how impressed she was by the numbers attending. It was obvious to me, as I was walking around taking photos, that so many people were thrilled to find old schoolmates and were having animated conversations with people that they hadn't seen in many decades.

We at CHESS endeavoured to make sure that there was enough seating at tables to accomodate our guests - we had many turn up unexpectedly, so it was a bit tight squeezing past the odd table! Nonetheless, the atmosphere was just very convivial. It was a great success and we are talking about holding a reunion for the same era again in four years' time at the chalet.

Thank you all for coming and I'm so pleased to see that you enjoyed yourselves. I will put as many photos in this issue as I can - sorry that there are no names but you know who you are!

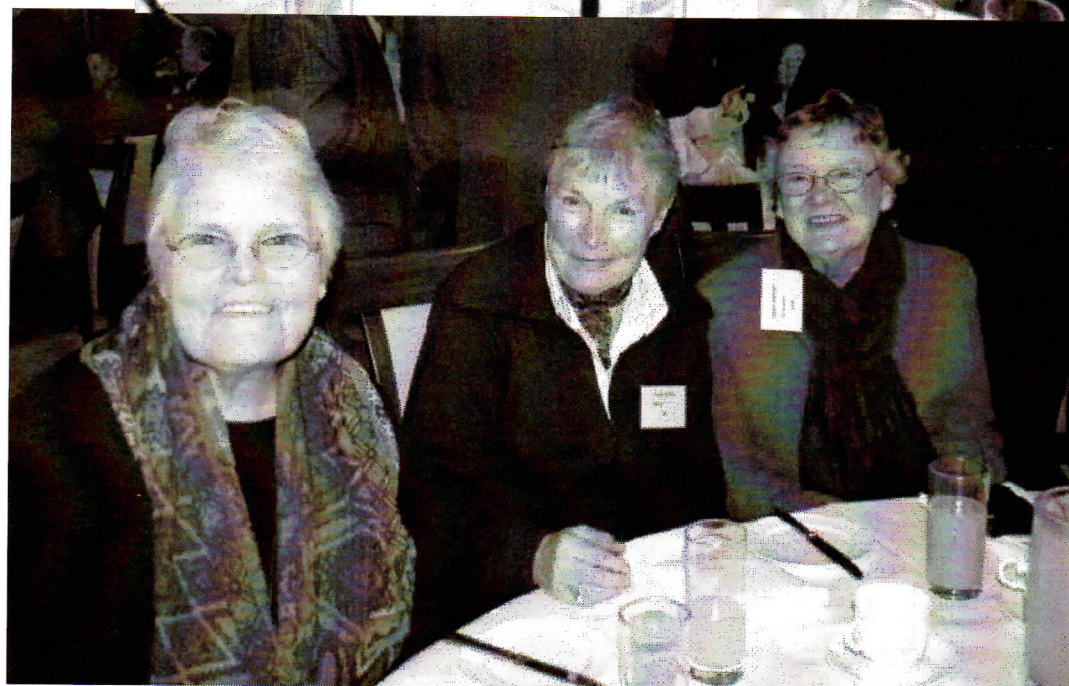
Debs

CHESS MOVES

CHIEFS MOVIES

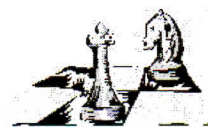












An update to what has been on our agenda - Bernard Corser is still liaising with MHSOBA about the database, the delay is due to infrastructure changes at the MHSOBA side. But we are hopeful that our longterm project will fall over the line. We aim to have a deeper relationship with the school community, outlined in Kate's report. Also following the successful 40s & 50s reunion, we want to hold a repeat reunion at the chalet in four years' time. Suggested changes to the format would be less tables to allow more mingling as we had more attendees than anticipated. And add an extra hour. We loved the Friday afternoon idea, rather than a weekend date. I heard that there were many photos held by former students that are not in our powerpoint....would LOVE it if they could be scanned and sent to me. Especially pre-1947 photos. 1941 ones are at the top of my list!!!!
Debs

VALE

Geoffrey Maxwell Lowe (CHS 1951 - 1954)

Passed away April 2010.

Robert Atkins (CHS 1948 - 1952)

Passed away three years ago.

Esme V L Owen (nee Kennedy) (CHS 1941 - 1942)

Elaine Hatfield (nee French) (CHS 1950 - 1954)

Passed away in February 2009.

Ralph Langford (CHS 1945 - 1949)

Passed away in 2002.

Philip Alan Luton (CHS 1941)

Leslie Victor Van Der Sluys (CHS 1951 - 1956 - Year 11)

Passed away July 26th, 2010.

June Margaret Sutton (CHS 1949 - 1953 - Year 11)

Passed away in September 2009.

(We were supplied with the above names in response to our last Chessmoves mailout.)